

# Port Manatee Connector PD&E STUDY

from Port Manatee to I-75

Project Overview (August 2011)

Efficient Transportation Decision Making (ETDM) Project Number (No.): 7619  
Federal Aid Project No.: 8887-358-A  
Financial Aid Project No.: 422724-1-22-01

## PROJECT DESCRIPTION

The Florida Department of Transportation (FDOT), in cooperation with the Federal Highway Administration (FHWA), initiated the Port Manatee Connector Project Development and Environment (PD&E) Study in May 2008. The PD&E Study involves the analysis of a range of alternatives for enhanced access between Port Manatee and Interstate 75 (I-75) in Manatee and Hillsborough Counties. To meet the purpose and need objectives of the project, proposed improvements may include upgrades to existing roadways and alternatives on a new east-west alignment. The Port Manatee Connector will provide access to Port Manatee at U.S. 41 and connect to a new or modified interchange with I-75 within the study area. The study area generally extends from south of I-275 to north of Valroy Road (south of State Road (S.R.) 674) and from the Tampa Bay coast line to east of I-75, in northern Manatee County and southern Hillsborough County.

## PLANNING, DESIGN, RIGHT OF WAY AND CONSTRUCTION

The PD&E Study is anticipated to be complete in 2013. The next stages of project development (including Design, Right of Way acquisition and Construction) are not funded in the current FDOT Adopted Five-Year Work Program.

## STUDY PURPOSE

The purpose of the PD&E Study is to develop and evaluate viable alternatives that will improve goods movement and traffic flow between I-75 and Port Manatee, which are both designated on Florida's Strategic Intermodal System (SIS) plan. The objective of this PD&E Study is to provide the information necessary to reach a decision on the type, design, and location of the Port Manatee Connector.

## PROJECT NEED

The need for the Port Manatee Connector is supported by local, statewide and nationwide land use, economic and growth objectives based on the following factors:

- I-75 and Port Manatee are both included in Florida's Strategic Intermodal System (SIS) plan.
- The proposed facility is identified in the 2030 SIS Multi-Modal Unfunded Needs Plan.
- The proposed facility is identified in the 2030 Sarasota-Manatee Metropolitan Planning Organization Long Range Transportation Plan (LRTP) Cost-Feasible Plan as a needs project.
- The proposed facility promotes international and statewide trade transportation networks.
- Port Manatee is the closest deep-water U.S. port to the Panama Canal (under expansion).

With the planned expansion of Port Manatee, in conjunction with the anticipated population and employment growth in the vicinity of the port, the Port Manatee Connector will play a critical role in accommodating travel demands and improving the movement of goods and people.





## PROJECT STATUS

The PD&E Study began in May 2008. Key project milestones to date include:

- As part of the scoping process, a Purpose and Need Public Meeting was held on September 30, 2008 to provide the public with an opportunity to review and comment on the Draft Purpose and Need Statement developed for the project.
- A Corridor Public Workshop was held December 11, 2008 to provide the public with an opportunity to review and comment on the potential corridors developed for the project.
- An Alignment Public Workshop was held on January 26, 2010 to provide the public with an opportunity to review and comment on the preliminary alignments developed for the project.
- The Final Corridor Analysis Report was approved by FHWA on August 23, 2010. The corridor analysis phase of the PD&E Study is complete in compliance with federal regulations.
- As a result of the corridor evaluations and public input, the seven alignments shown below were developed within the recommended corridors. In compliance with federal regulations, extensive engineering and environmental analyses were conducted to evaluate each alignment. Based on the alignment analysis and consultation with FHWA, six of the seven alignments (Alignments 2A, 2B, 2C, 3, 4 and 5) are recommended for further study.
- The project is now in the alternatives phase of the PD&E study. The alignments recommended for further study will form the basis for the alternatives to be further refined, evaluated and documented. Currently, the study team is developing alternatives within each alignment for further evaluation. The next public meeting is anticipated for fall 2011 to provide an opportunity for involvement in the development and evaluation of alternatives. The development of alternatives will be followed by additional engineering and environmental evaluations to determine the anticipated project effects of each alternative. The project effects for each alternative will be documented in the Draft Environmental Impact Statement (EIS) for the project and presented at the Public Hearing which is tentatively scheduled for summer 2012.

## OPPORTUNITIES FOR PUBLIC INVOLVEMENT

Community input is solicited throughout the PD&E process. Opportunity for public input will be provided through public meetings, a public hearing, newsletters and through the project Web site. Notifications of public meetings will be posted to the Web site and mailed to local officials, agencies, stakeholders, special interest groups and property owners within the study area and individuals who have requested to be included on the project mailing list. Coordination with affected Federal, State, and local agencies; project stakeholders and the interested public who have expressed interest in this project has been undertaken and will continue.

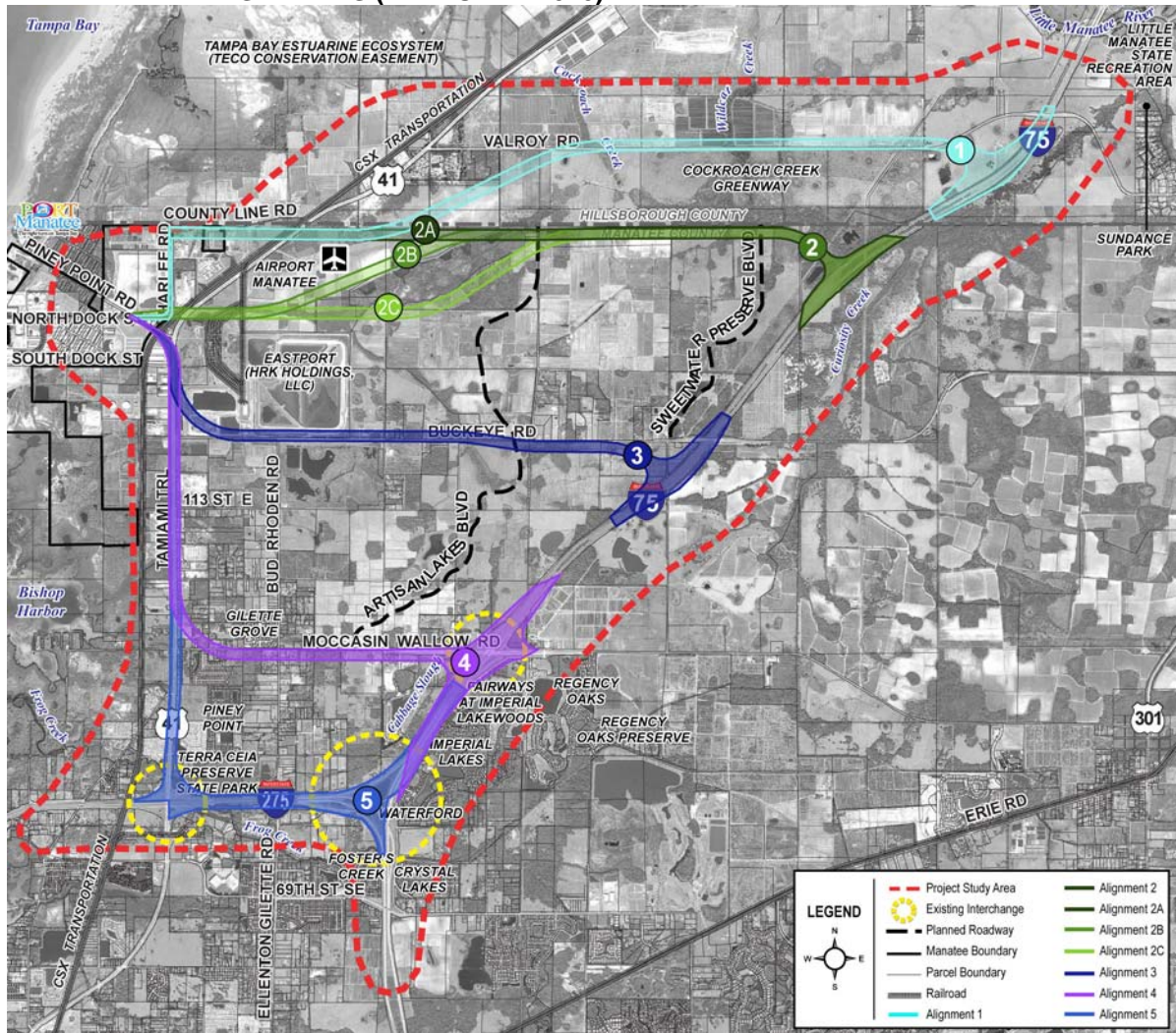
## CONTACT INFORMATION

For additional information on this project or if you would like to schedule a meeting, please contact:

Tony Sherrard, Project Manager  
Florida Department of Transportation, District One  
P.O. Box 1249  
Bartow, FL 33831  
Phone: (863) 519-2304  
Website: [www.portmanateeconnector.com](http://www.portmanateeconnector.com)  
Email: [antone.sherrard@dot.state.fl.us](mailto:antone.sherrard@dot.state.fl.us)



# PRELIMINARY ALIGNMENTS (FEBRUARY 2010)



# PROJECT LOCATION MAP AND STUDY AREA

